

PRODUCT SHEET



BoreSaver™ IKL PRO

What does BoreSaver™ IKL PRO do for your pumps and borehole?

IKL Pro* is an approved cleaning treatment that dissolves **calcium carbonate** or **manganese oxide** found in bores, wells, pumps and pipes. Specially formulated as a combination solution **IKL PRO** also offers an effective solution for water supply systems that suffer from both problems.

- Remove calcium carbonate and manganese contamination
- Improve water quality
- Increase water flow
- Extend the life of pumps and equipment



- EASY TO USE
- SAFE
- POWERFUL
- ECONOMICAL

How to Recognise the Problem?

Any of the following symptoms will indicate a problem with **calcium carbonate, manganese and iron bacteria deposits**:

- Blackish-brown deposits indicates manganese oxide
- Cloudy, rusty water at pump start-up
- Reduced water flow from the bore
- Distinct white powder or stone
- Unpleasant odour in water pumped from the well
- Slimy, rusty deposits blocking main lines and laterals
- Severe staining on pavements, walls or foliage.
- Orange red rusty slime inside pipes



What happens if you leave your well or equipment in these conditions?

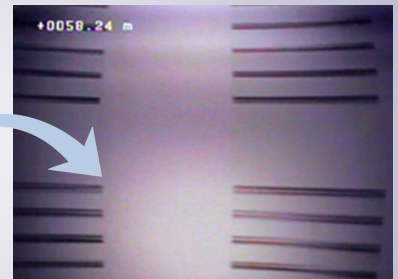
This will lead to a decrease in water well efficiency which will **increase energy costs** and **damage your equipment**.

Supplied as a liquid concentrate, IKL Pro can be added directly to the water supply without dismantling the pump and associated equipment.

BEFORE



AFTER



Footage from R-CAM XLT showing before and after cleaning treatment



Manufactured in the UK

*BoreSaver IKL Pro is an exclusive formulation of Geoquip Water Solutions Ltd.



WATER SOLUTIONS

Geoquip Water Solutions Limited

Unit 7, Sovereign Centre
Farthing Road Industrial Estate
Ipswich, IP1 5AP, ENGLAND

TEL: + 44 (0)1473 462046

EMAIL: info@geoquipservices.co.uk
www.geoquipwatersolutions.com

BoreSaver™ IKL PRO

BORESAVER™ IKL PRO

Dosage

IKL PRO is supplied as a concentrate liquid and can be undiluted or mixed with water just prior to use depending on the dosage required. It is a property chemical blend of acids with non-ionic surfactant which promotes emulsions.

IKL PRO is added directly to the water system and the amount to use is based on the volume of water. Typical dosage rates are between 50 and 100 litres per cubic metre in the well, depending on the severity of the contamination.

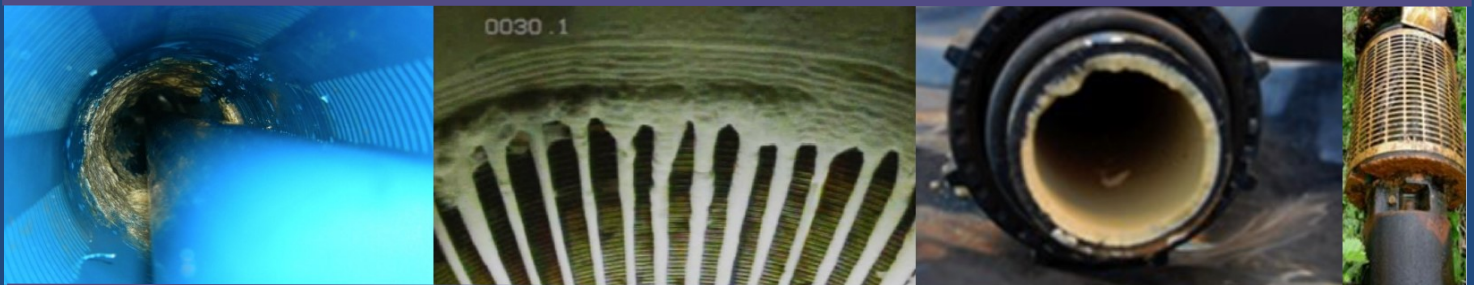
The treatment works directly on the problem, loosening & dissolving the deposits and related contamination. Any of the other standard rehabilitation methods are then used, including surging and brushing, airlifting and pump-in well recycling. Followed by safely pumping the deposits & contamination away. The ideal cleaning time period is between 4 and 24 hours.

▶ KEY FEATURES

- Contains powerful ingredients to loosen, dissolve and remove calcium and manganese that has built up in the borehole
- In most cases there is no need to pull the pump
- Extends life of pumps and equipment

▶ DID YOU KNOW?

- Calcium carbonate is a common chemical compound substance found in rock in all parts of the world and is usually the principal cause of hard water.
- Hard water causes scaling, which is the left-over mineral deposits that are formed after the hard water has evaporated and is known as limescale.
- For water extractors, excessive calcium carbonate can clog pipes and pumps and restrict water production.



Calcium Carbonate Contamination

Whilst calcium carbonate can be removed, it is not possible to completely eliminate contamination. However, regular use of BoreSaver IKL PRO can control the problem and ensure the water supply and pumping equipment is working at maximum efficiency.

The frequency of follow up cleaning will be determined by the natural conditions in the system. An **ongoing maintenance programme is recommended.**

▶ WE RECOMMEND A SURVEY IS DONE

Geoquip supply a range of LAVAL downhole cameras to survey your well for contamination.



For more information on the BoreSaver and our other products please visit: www.geoquipwatersolutions.com



Geoquip Water Solutions Limited

Unit 7, Sovereign Centre
Farthing Road Industrial Estate
Ipswich, IP1 5AP, ENGLAND
TEL: + 44 (0)1473 462046
EMAIL: info@geoquipservices.co.uk
www.geoquipwatersolutions.com