

PRODUCT SHEET

BoreSaver



BoreSaver™ MKL-I

What does BoreSaver™ MKL-I do for your pumps and borehole?

MKL-I* is a general **all-purpose cleaning treatment** that completely removes deposits and slime from boreholes, wells, pumps and equipment. It is ideal for a range of contamination problems including:

- Iron Bacteria
- Calcium Carbonate
- Scale, Iron Oxide and Manganese Oxide

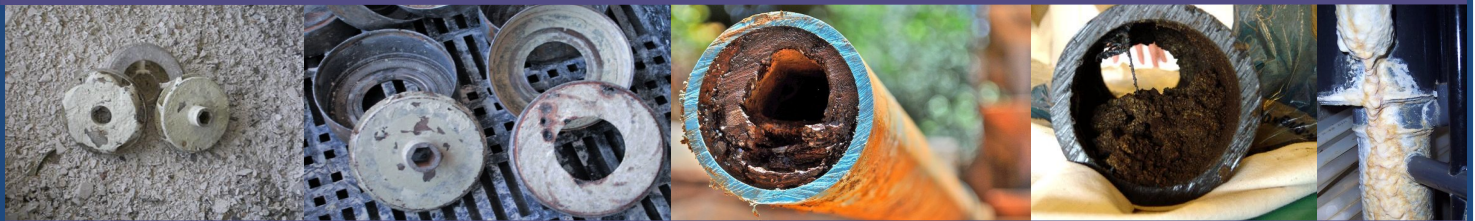


- EASY TO USE
- SAFE
- POWERFUL
- ECONOMICAL

How to Recognise the Problem?

Any of the following symptoms will indicate a problem with **lime scale**, **iron bacteria** or **iron oxide deposits**:

- Orange red rusty slime inside pipes
- Cloudy, rusty water at pump start-up
- Reduced water flow from the bore
- Slimy deposits blocking main lines and laterals
- Unpleasant odour in water pumped from the well
- Slimy, rusty deposits in drippers and sprinklers
- Deposits of distinct white powder or stone
- Blackish-brown deposits indicates manganese oxide



What happens if you leave your well or equipment in these conditions?

This will lead to a decrease in water well efficiency which will increase energy costs and damage your equipment.

NSF/ANSI 60

That BoreSaver Ultra C is manufactured in the UK and approved by **NSF** for potable water supplies, it is safe, environmentally friendly, easy to use and biodegradable.

The NSF certification is a mark of distinction that the BoreSaver MKL-I provides assurance that the product is safe for use in drinking water.

Feel reassured with our NSF approved UVT Safety Feature, shine a UV light on the clearance to prove the absence of any BoreSaver residuals.



Certified to
NSF/ANSI 60



Manufactured in the UK

*BoreSaver MKL-I ECO is an exclusive formulation of Geoquip Water Solutions Ltd.



Geoquip Water Solutions Limited

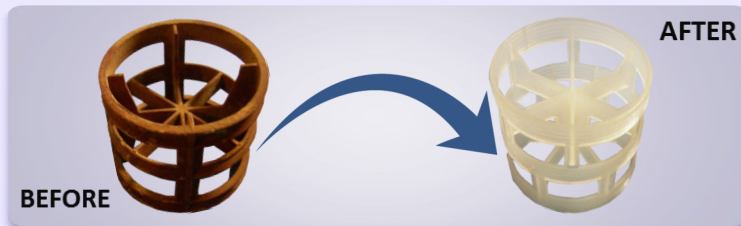
Unit 7, Sovereign Centre
Farthing Road Industrial Estate
Ipswich, IP1 5AP, ENGLAND
TEL: + 44 (0)1473 462046
EMAIL: info@geoquipservices.co.uk
www.geoquipwatersolutions.com

BoreSaver™ MKL-I

BORESAVER™ MKL-I

Dosage

MKL-I is a **liquid** added directly to the water system and the amount is based on the volume of water. Typical dosage rates are between 50 and 100 Litres per cubic meter of water in the well, depending on the severity of the contamination.



The treatment works directly on the problem, loosening & dissolving the deposits and related contamination. Any of the other standard rehabilitation methods are then used, including surging and brushing, airlifting and pump-in well recycling. Followed by safely pumping the deposits and contamination away.

▶ KEY FEATURES

- **NEW UVT Safety feature.** Shine a UV light on the clearance to prove the absence of any residual treatment water
- Contains powerful ingredients to loosen, dissolve and remove iron that has built up in the borehole
- In most cases there is no need to pull the pump
- Extends life of pumps and equipment
- Powerful, effective and economical

▶ QUICK TIP

BoreSaver is not a permanent fix for your borehole contamination. We highly recommend that a clean is carried out regularly as the contamination will reappear and could effect your water supply & equipment again.



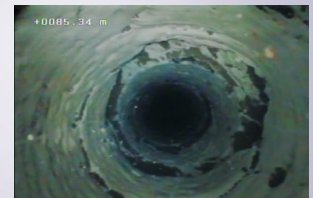
Iron Bacteria Contamination

Whilst iron oxide deposits can be removed, it is not possible to completely eliminate iron bacteria contamination. However, regular use of MKL-I can control the problem and ensure the water supply and pumping equipment is working at maximum efficiency.

The frequency of follow up cleaning will be determined by the natural conditions in the system. An **ongoing maintenance programme is recommended.**

▶ WE RECOMMEND A SURVEY IS DONE

Geoquip supply a range of LAVAL downhole cameras to survey your well for contamination.



For more information on the BoreSaver and our other products please visit: www.geoquipwatersolutions.com



Geoquip Water Solutions Limited

Unit 7, Sovereign Centre
 Farthing Road Industrial Estate
 Ipswich, IP1 5AP, ENGLAND
 TEL: + 44 (0)1473 462046
 EMAIL: info@geoquipservices.co.uk
www.geoquipwatersolutions.com